

LEAD SHEET EXAMPLE

(IN JAZZ HOUSE STYLE)

MEDIUM SWING

♩ = 120

JENNY TRANSCRIBERSON

Dm

G⁷

Cmaj⁷



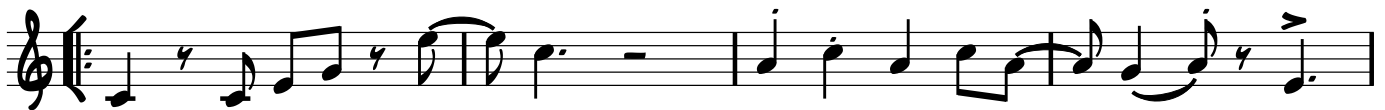
Cmaj⁷

F

F[♯]°

C/G

Am/E



THIS IS AN EX - AM - PLE

THIS IS AN EX - AM - PLE OH,

mf

Dm⁷

G⁷

C

C[♯]°

Dm⁷

G⁷



YEAH I LOVE EX - AM - PLES, YES I DO!

OH YEAH!

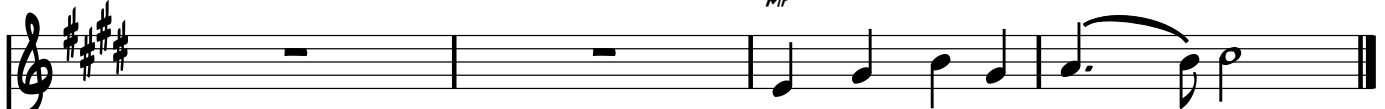
PIANO AND VOICE EXAMPLE

(IN JAZZ HOUSE STYLE)

♩ = 80

OSCAR TRANSCRIBERSON

MF



I SURE LOVE EX - AM - PLES!

F

MP

